

<b>JOHNSON, MIRMIRAN &amp; THOMPSON</b>	
<b>SIN Numbers Awarded Under Contract</b>	<b>871-2</b> Concept Development and Requirements Analysis <b>871-3</b> System Design, Engineering and Integration <b>871-7</b> Construction Management
<b>Contract Period</b>	April 2, 2014 – April 1, 2019
<b>Minimum Order</b>	\$100.00
<b>Maximum Order</b>	\$1,000,000
<b>Geographic Coverage</b>	CONUS, Alaska, Hawaii, Puerto Rico, and the District of Columbia
<b>Prompt Payment Terms</b>	2% / Net 20
<b>Expedited Delivery</b>	Available for all services at the Ordering Activity's expense
<b>Warranty Provision</b>	JMT certifies that all labor provided will meet the minimum education and experience requirements set forth in the awarded GSA Schedule Pricelist
<b>Government Purchase Cards</b>	Accept Government purchase cards for orders for both above and below the micro-purchase threshold
<b>Ordering Address</b>	Johnson, Mirmiran & Thompson 72 Loveton Circle Sparks, MD 21152-0949 Attention: Sally P. Philbin, Senior Associate Ph – 410-329-3100 Fax – 410-472-2200 Email: <a href="mailto:sphilbin@jmt.com">sphilbin@jmt.com</a>
<b>Payment Address</b>	Johnson, Mirmiran & Thompson 72 Loveton Circle Sparks, MD 21152-0949
<b>DUNS</b>	05-627-8633
<b>CAGE Code</b>	1B2K5

**Johnson, Mirmiran & Thompson (JMT)** is a multi-disciplined firm serving clients throughout the Eastern United States since 1971. We provide a complete array of engineering and management services integrated to our client's needs. JMT serves a diverse clientele including federal, state, and local government agencies, commercial, industrial, educational, and private institutions.

- **Engineering** - JMT provides a comprehensive range of integrated engineering services from civil, structural, environmental, and geotechnical, to mechanical, electrical and plumbing design. In addition to designing new buildings, our extensive design experience includes building demolition, rehabilitation, renovation, building automation, IT/communications, and fire suppression.
- **Architecture** - JMT offers a complete package of architectural planning and interior design services. We assist our clients in analyzing, developing and constructing financially successful projects. We specialize in providing comprehensive physical design services, master planning and feasibility studies.
- **Operations** - JMT possesses extensive experience in facility operations. From start-up through commissioning, JMT engages a systematic process documenting the performance of all facility systems in accordance with the design intent and the client's needs. We utilize contemporary technologies, ensuring adherence to high-performance building standards.
- **Program Management** - JMT provides comprehensive program management services with our professional, experienced staff. We effectively accomplish the required schedule, budget and quality objectives associated with the Client's strategic goals.
- **Construction Management** - JMT delivers a full array of construction management services from project planning through project closeout. We assist clients to establish clearly defined project goals including scope, schedule and budget.

Since our start in 1971, JMT has gained respect and recognition from our clients as an organization that provides the highest quality engineering services, on time and within budget. Our reputation for outstanding achievement has extended throughout the United States as a result of our selection for numerous national and regional project awards and honors.

## **JMT Office Locations**

- Sparks, Maryland
- York, Philadelphia, Allentown, and Pittsburgh, Pennsylvania
- Richmond, Virginia Beach, and Herndon, Virginia
- Newark, Delaware
- Washington, D.C.
- Newark, Kinnelon, and Trenton, New Jersey
- Lake Mary and Ft. Lauderdale, Florida
- New York, NY
- Charleston, SC



## 871-2: Concept Development and Requirements Analysis

### Project/Program Management

JMT's Project Management team allows clients the flexibility to have their programs managed for them. We are able to provide oversight of the project, its costs, schedule, and the quality of the contractor's workmanship to ensure our clients' satisfaction and protect their interests. In addition, we often recommend innovative planning, design, and construction methods to expedite the project schedule and reduce costs.

### Planning

JMT has provided planning and environmental documentation services to state and local clients for numerous types of facilities. These services have been provided in accordance with the requirements of NEPA, the National Historic Preservation Act, Clean Water Act, Clean Air Act, and Executive Order 12898 for Environmental Justice.

JMT's staff includes registered transportation and urban planners, environmental specialists, traffic engineers, landscape architects, and public relations specialists.

- **Community Involvement As Part of the Planning Process** - JMT personnel have extensive experience at developing consensus through a variety of public participation techniques such as public meetings, hearings and open-house presentations; design charettes and workshops; community visioning workshops; visual preference surveys; study and steering committee meetings; individual and group interviews; and, citizen and agency surveys. JMT staff is experienced at engaging public participation for the purpose of community goal setting, problem identification, strategy development and alternative analysis. These techniques have been applied to planning activities such as the development of comprehensive and master plans, strategic plans, site feasibility studies, park and greenway master plans, bikeway and pedestrian master plans and park and recreation facility master site plans.
- **Comprehensive Plan Development** - JMT planning staff have experience developing Comprehensive Plans and various plan elements including land use, transportation, economic development, utilities, historic preservation, housing, organization and agency structures and community services. JMT utilizes GIS capabilities to create inventories, conduct assessments, perform spatial analysis and prepare a variety of maps including but not limited to an "Official Map", current and future land use maps and facility inventory maps.
- **Master Plan Development** - JMT personnel have extensive experience with development and preparation of master plans and site development plans for the purpose of creating neighborhood revitalization plans, recreation, park and open space plans, key opportunity site design/development plans, and greenways/bicycle plans. JMT has experience at preparing strategic implementation plans with cost estimates and potential funding sources for a variety of master plan projects. GIS capabilities are used to prepare master plan base maps, inventory land use and public facilities, analyze socio-economic data, measure impacts, perform alternative analysis and prepare master plans.



- **Site Feasibility Studies** - JMT staff have experience with the development of site feasibility studies for commercial development, mixed commercial and residential development, public and private recreation facilities, industrial development, government complexes and transit transfer stations and facilities. Site feasibility criteria take into account local policies, regulations and future development plans. GIS capabilities are used to prepare site plan base maps, inventory land use and public facilities, analyze socio-economic data, measure impacts, perform alternative analysis and prepare site plans.
- **Streetscape & Public Space Design** - JMT is experienced at designing a variety of community enhancement projects including streetscapes and public space designs for the purpose of improving the visual character of communities. The planning and design of streetscapes and public space include amenities such as pedestrian lighting, paving treatments, placement of underground utilities and a variety of site furnishings such as benches, trash receptacles, landscaping, banners, pedestrian signage and street trees.
- **Downtown & Town Center Planning** - JMT planners and landscape architects are experienced at developing downtown and town center concept plans. Concept plans provide a design for the revitalization and improvement of a downtown or town center incorporating both aesthetic and safety improvements while creating common space and a sense of place. JMT staff develop concept plans that build upon historical foundations and the existing infrastructure. JMT's plan address a number of urban issues such as traffic circulation, pedestrian and bicycle safety, access to transit, parking, information kiosks, street lighting, streetscape vegetation, ADA compliance, historic preservation, community focal points, green space, vehicular and pedestrian wayfinding.
- **Zoning Ordinance & Subdivision/Land Development Ordinance** - JMT personnel have extensive experience with preparation and administration of zoning and subdivision/land development ordinances. Services include: evaluation and assessment of ordinances in conjunction with local Comprehensive Plan and/or Community Development Plan goals, objectives and strategies; research and development of ordinance regulations; demonstration and analysis of regulations as they relate to land use class, intensity, density and neighborhood impact; and, preparation of ordinance amendments and review of regulations in conjunction with state enabling legislation. GIS capabilities are used to inventory land use, create zoning boundaries, assess impact, perform spatial analysis and prepare zoning maps.
- **Spatial Analysis Using GIS** - JMT personnel are experienced at performing analysis of complex spatial data bases with associated descriptive, financial and socio-economic data. Spatial modeling capabilities include polygon overlays, buffering, custom queries and reports and network analysis. JMT GIS staff can also perform capability/suitability modeling, weighted models and Thiessen modeling for analysis of spatial data using tabular databases. Specific types of analysis include but are not limited to needs analysis, impact analysis, environmental impact statements, project evaluation and alternative analysis. JMT staff utilize GIS capabilities to perform spatial analysis for a variety of community planning activities.

- **Map Production** - JMT provides services for producing a variety of map series, high quality presentation graphics for meetings, plans and project development and large quantities of map and graphic products for distribution. JMT utilizes GIS capabilities to produce a variety of maps including but not limited to street maps, zoning maps, land use maps, utility service maps, site plans and other maps with user defined parameters.
- **Grants Writing and Administration** - JMT personnel have extensive experience with grants writing and administration for a variety of state and federal grants including but not limited to State Planning Assistance Grants (SPAG), Legislative Funds, Keystone Grants (DCNR Grants), Strategy Community Partnership Planning Grants, TEA 21, Safety and Mobility Initiative Program Funds and Community Development Block Grant Funds (CDBG).

### **Environmental Compliance and Permit Review Services**

JMT has provided the review of projects designed by other consultants for compliance with erosion and sediment control and stormwater management laws, regulations and guidelines. Our certified reviewers have been responsible for making recommendations to the Maryland Department of the Environment's (MDE) Water Management Administration, Plan Review Division Chief, regarding the issuing of permits for erosion and sediment control, stormwater management and small ponds. Most project assignments involve highways and bridges; however, maintenance facilities, wetland mitigation sites, drainage systems and site development projects are also reviewed.

Fast tracked compliance reviews have recently been performed for the following clients:

- Andrews Air Force Base
- White Oak Federal Research Center
- Patuxent River Naval Air Station
- Naval Surface Warfare Center
- National Institute of Health
- Maryland Port Administration
- Maryland State Highway Administration
- Morgan State University
- Good Samaritan Hospital
- Ft. Detrick
- Food and Drug Administration
- Bowie State University

## 871-3: System Design, Engineering and Integration

### Professional Development Training

Our staff shares its expertise through various seminars to private and public employees at the state and local levels. Training covers a wide variety of subjects, involving project scheduling, public involvement, website applications, project inspection, and document control systems.

The technology we depend on to provide quality designs changes too rapidly for most of us to keep pace. With the heavy demands being put on the engineering profession, it is becoming increasingly vital that our staffs keep abreast of the latest technologies, as well as improve their management skills.



JMT has developed customized training programs which meet the needs of our clients. Based upon the results of a needs assessment and program development analysis, these courses are offered to project managers and support staff throughout the year at various locations.

JMT uses the latest techniques, technology and sample projects to develop various aspects of each individual training course. The courses are routinely modified and updated based upon input received from course participants and client representatives. Examples of training courses are as follows:

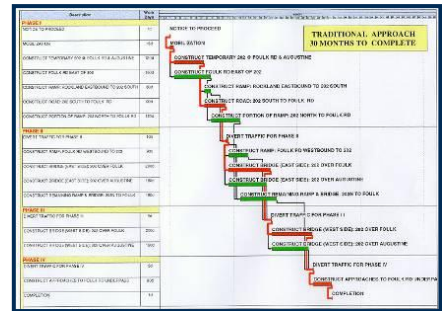
- **CPM Schedule Review Process** - JMT provides comprehensive Critical Path Method (CPM) schedule training that focuses on the fundamentals of CPM scheduling methodology and can be customized to address the CPM scheduling specification used by an agency or client. The level and detail of instruction responds to the client's needs and can range from basic CPM scheduling to advanced scheduling and delay analysis techniques. Our staff of experienced construction managers presents the material in a clear and concise manner by referencing scheduling subject matter to the schedule specification and by using actual field examples to bring a full understanding of the topic.
- **Public Involvement Facilitation** - The introductory *Public Involvement Facilitation* course created for the Pennsylvania Department of Transportation supports the planning and engineering process for highway and bridge projects. The course provides techniques, tools and skill building to support working with the public and facilitation of public meetings throughout PENNDOT's project development process. Training is targeted to engineers and other professionals responsible for management and design of projects. The course is taught in two phases. The first phase includes identifying a public involvement process specific to the client's project, basics of public speaking, techniques for dealing with difficult people, and context-sensitive design techniques. Phase II of this course focuses on facilitation and presentation techniques and tools to support PENNDOT's Plans Display meetings and the project development process.
- **Web Based Training Calendar** - A *Web-Based Training Calendar* course for PENNDOT provides training to supervisors, project managers, Bureau administrators and other professionals to enhance navigation of the Bureau of Design's web-based training calendar, the ECMS Training Calendar.

- **Temporary Traffic Control Procedures** - The Maryland State Highway Administration's (SHA) Office of Traffic Safety has taken advantage of JMT's programs to train contractor and public agency personnel in the *MDOT Temporary Traffic Control Procedures*. This one-day class is held twice each month and culminates with a written exam.
- Additionally, our training staff has developed, implemented, and taught a three-day class for SHA inspection personnel in the proper inspection techniques for signalization and lighting structures. Development of the class includes in-field data gathering, coordination with all SHA District Engineers, and review of manufacturers' specifications and other State DOT procedures.
- **Context Sensitive Solutions Website Application** - JMT provided project development, training and technical assistance with respect to the PENNDOT initiation referred to as Context Sensitive Solutions (CSS). JMT was responsible for overall project management, course development and collaboration with PENNDOT staff, representatives from the Attorney General's Office and consulting team members. JMT was responsible for developing a course to meet PENNDOT's needs based upon FHWA's initiative and similar training offered by other states.
- The JMT team prepared and conducted the first round of training within four months of notice to proceed. The course was designed to enhance the transportation project development process for non-complex, moderately complex, betterment, bridge replacement and maintenance projects. The course provides tools, techniques and activities that build skills in flexible design using context sensitive solutions. Course topics include defining context sensitive solutions, place making and field scoping in the context of the community, community consensus building through continuous community/public involvement, visualization techniques, flexibility in design standards and criteria, incorporation of bicycle and pedestrian solutions, examples of CSS, construction cost and maintenance, tort liability and funding options. The course features examples of CSS projects across the state as well as from adjacent states with a CSS initiative.
- The course builds upon other PENNDOT initiatives such as bicycle and pedestrian access, public involvement, linking land use and transportation planning and the safety audit/review process. In addition, there is consistency with FHWA's context sensitive design initiative, walkable community initiative and the community impact assessment process for transportation projects.
- As a result of course development, input from class participants and the project development team, a community context audit form was created. The audit form provides the basis for project identification and community assessment to indicate areas of concern that require attention throughout the project development process. The audit form was designed to be utilized by either local staff or PENNDOT staff at the earliest possible date to help formulate the scope of the project. The form is consistent with PENNDOT environmental review process and can be utilized when conducting preliminary engineering activities if the audit was not previously conducted.
- **Website Development** - The CSS website was created as a resource center for PENNDOT and other State Transportation Departments. The site serves as a forum for presenting selected PENNDOT feature projects which embraced the concepts of Context Sensitive Solution. The site was developed using Open Source technology including Linux OS, PHP and MySQL. The layout and design was created as template files to improve modifications and maintenance. Feature project content is maintained in a normalized MySQL database which is accessed by keyword searches and preprogrammed SQL queries based on feature project categories.

## 871-7: Construction Management

As an agent of the owner, JMT assumes a proactive stance to anticipate potential problems and develop solutions before the program is adversely affected, allowing the owner to maintain schedule, cost and quality. Our staff of professional, highly trained and experienced personnel delivers construction support services for transportation facilities; commercial, educational, and industrial buildings; landscape and environmental improvements; and a variety of other public works projects.

- CPM Scheduling** - We employ a staff of individuals who are highly proficient in critical path method (CPM) scheduling. With the enforcement of a CPM schedule, cause and responsibility can be determined easily, making schedule review a valuable tool that our clients can use to avoid disputes and delays. Our staff is familiar with the latest versions of various CPM scheduling software packages.
- Cost Estimating** - JMT's staff is experienced in the development of unit cost pricing and can prepare project cost estimates for our clients.
- Constructability Reviews** - Clients rely on our ability to determine whether a project can be completed as envisioned by the design engineers. By reviewing the sequence of construction, we can recommend improvements to save time and money. Our analysis of the project specifications helps to identify items in the construction bid documents that may be missing or need correction.
- Construction Inspection** - JMT's inspectors administer vital functions toward the successful completion of construction projects. Typical services we provide include monitoring construction practices and schedules, verifying compliance with plans and specifications, materials testing, project documentation, environmental protection, and ensuring work zone safety for both the workers and the public.
- Claims / Change Order Analysis** - JMT researches construction claims for virtually all issues that might arise during a project. Our staff has experience in preparing evidence and testifying before the Board of Contract Appeals on behalf of our clients. We analyze all project records and correspondence, conduct interviews with key personnel, and review past Board and other court decisions to reach conclusions that can be used by the owner to resolve disputes successfully. We review change orders and Requests for Equitable Adjustment for patterns and inconsistencies, and we analyze prices submitted by contractors to compare them against actual costs for verification of reasonableness.





## Labor Rates

Professional Engineering Labor Category	Year 11	Year 12	Year 13	Year 14	Year 15
	4/2/2014 to 4/1/2015	4/2/2015 to 4/1/2016	4/2/2016 to 4/1/2017	4/2/2017 to 4/1/2018	4/2/2018 to 4/1/2019
Principal Project Manager	\$295.37	\$300.39	\$305.50	\$310.69	\$315.97
Project Manager	\$236.30	\$240.31	\$244.40	\$248.55	\$252.78
Project Engineer	\$216.61	\$220.29	\$224.04	\$227.85	\$231.72
Design Engineer	\$180.19	\$183.25	\$186.37	\$189.53	\$192.76
Designer	\$161.48	\$164.22	\$167.01	\$169.85	\$172.74
CADD Operator/Technician **	\$103.38	\$105.13	\$106.92	\$108.74	\$110.59
Project Architect	\$207.05	\$210.57	\$214.15	\$217.79	\$221.49
Architect	\$176.99	\$180.00	\$183.06	\$186.17	\$189.33
Project Landscape Architect	\$179.49	\$182.54	\$185.65	\$188.80	\$192.01
Landscape Architect	\$126.06	\$128.21	\$130.39	\$132.60	\$134.86
Project Environmental Specialist	\$112.39	\$114.30	\$116.24	\$118.22	\$120.23
Environmental Specialist	\$94.50	\$96.11	\$97.74	\$99.40	\$101.09
Construction Project Manager	\$196.91	\$200.26	\$203.66	\$207.12	\$210.65
Construction Resident/Project Engineer	\$154.44	\$157.07	\$159.74	\$162.45	\$165.22
Senior Inspector	\$129.19	\$131.39	\$133.62	\$135.89	\$138.20
Inspector	\$99.50	\$101.19	\$102.91	\$104.66	\$106.44
Professional Surveyor	\$206.77	\$210.28	\$213.86	\$217.49	\$221.19
Party Chief	\$99.01	\$100.70	\$102.41	\$104.15	\$105.92
Instrument Person	\$70.88	\$72.09	\$73.31	\$74.56	\$75.83
Rod Person	\$57.60	\$58.58	\$59.58	\$60.59	\$61.62
Administrative/Clerical **	\$74.82	\$76.09	\$77.39	\$78.70	\$80.04

\*\* Indicates SCA eligible categories. See the SCA Matrix below for additional information regarding these labor categories.

SCA Matrix				
SCA Eligible Contract Labor Category	SCA Equivalent Code Title	WD Number	Wage Determination	JMT Rate
Administrative Assistant *	Word Processor II	01612	\$ 17.67	\$ 73.57
CAD Technician *	Engineering Technician III	30083	\$ 28.79	\$ 101.65

Wage Determination No.: 2005-2247

Revision No.: 14

Date Of Revision: 06/19/2013

State: Maryland

Area: Maryland Counties of Anne Arundel, Baltimore, Baltimore City, Carroll, Harford, Howard

## Labor Categories

- **Principal Project Manager** – Bachelors Degree in engineering, architecture and/or math and science. Advanced degree in engineering or business. Minimum of 20 years experience. Registered PE, RLS, RLA or comparable registration.
- **Project Manager** – Bachelors Degree in engineering, architecture and/or math and science. Advanced degree in engineering or business. Minimum of 15 years experience. Registered PE, RLS, RLA or comparable registration.
- **Project Engineer** - Bachelors Degree in engineering, architecture and/or math and science. Minimum of 10 years experience. Engineer-in-Training, Registered PE, or comparable registration.
- **Design Engineer** - Bachelors Degree in engineering, architecture and/or math and science. Entry level to 10 years experience. Engineer-in-Training, Registered PE, or comparable registration.
- **Designer** - High School graduate. 5 years experience. NICET or comparable registration.
- **CADD Operator/Technician** – High School graduate. Entry level to 10 years experience. NICET.
- **Project Architect** – Bachelors Degree in architecture and a minimum of 10 years experience. Registered Architect.
- **Architect** – Bachelors Degree in architecture. Entry level to 10 years experience. In lieu of a registration requirement, a Bachelors Degree in architecture from an accredited program is required.
- **Project Landscape Architect** – Bachelors Degree in landscape architecture. Minimum of 10 years experience. Registered Landscape Architect or comparable registration.
- **Landscape Architect** – Bachelors Degree in landscape architecture. Entry level to 10 years experience. In lieu of a registration requirement, Bachelors Degree in landscape architecture from an accredited program is required.
- **Project Environmental Specialist** – Bachelors Degree in biology, ecology, environmental planning, landscape architecture, or a related field. Minimum of 10 years experience. In lieu of a registration requirement, a Bachelors Degree in biology, ecology, environmental planning, landscape architecture, or a related field and additional training in specific areas such as wetland delineation, Forest Conservation Act, NEPA documentation, etc., is required.
- **Environmental Specialist** – Bachelors Degree in biology, ecology, environmental planning, landscape architecture or a related field. Entry level to 10 years experience. In lieu of a registration requirement, a Bachelors Degree in biology, ecology, environmental planning, landscape architecture, or a related field is required.
- **Construction Project Manager** – Bachelors Degree in engineering or a related field. Minimum 15 years experience. Registered Professional Engineer.

- **Construction Resident/Project Engineer** – Bachelors Degree in engineering or a related field. Minimum of 10 years experience. Degree may be substituted with a minimum of 20 years experience supervising construction projects. Registered Professional Engineer and/or NICET, or comparable registration.
- **Senior Inspector** – High School Graduate. Minimum 10 years of construction inspection experience. NICET or comparable registration.
- **Inspector** – High School Graduate. Entry level to 10 years of construction inspection experience. NICET or comparable registration.
- **Professional Surveyor** – Bachelors Degree in surveying, geography or engineering. Minimum of 12 years experience. Registered Professional Land Surveyor or Property Line Surveyor.
- **Party Chief** – High School Graduate. Minimum 10 years of survey experience.
- **Instrument Person** – High School Graduate. Minimum 5 years of survey experience.
- **Rod Person** – High School Graduate. Entry level to 5 years of survey experience.
- **Administrative/Clerical** – High School Graduate. 5 years of related experience.

## References

**City of Baltimore**  
**Department of Public Works**  
**General Services Engineering**  
Dennis Chojnowski  
410-396-4841

**Federal Bureau of Investigation**  
**Facilities & Logistics Services Division**  
Lawrence Ridings  
202-436-8036

**Maryland Department of the Environment**  
**Sediment and Stormwater Management Plan**  
**Review Division**  
Jim Tracy, Chief  
410-537-3566

**University of Maryland Medical System**  
Mike Popchak  
410-328-4390

**Maryland Aviation Administration**  
**Division of Engineering**  
Ben Chin, Manager  
410-859-7093

**Baltimore County Public Schools**  
**Facilities Engineering Section**  
Leslie Lazzeri  
410-887-6301

**Pennsylvania Turnpike Commission**  
Michael Phillips  
717-939-9551

**Commonwealth of Virginia**  
**Department of Mental Health**  
**Mental Retardation and Substance Abuse**  
**Services**  
Margaret Jones  
804-371-0313

**Frederick County DPW**  
**Department of Construction**  
Chuck Nipe, Chief  
301-694-1689