



SIN 899-1 Environmental Consulting Services  
SIN 899-7 Geographic Information Systems (GIS) Services

## GSA Schedule + Price List



**the LA group**  
Landscape Architecture  
and Engineering, P.C.

[www.thelagroup.com](http://www.thelagroup.com)



**Contract Holder**  
Contract GS-10-F-0033X

Contract Period: Nov. 24, 2010 – Nov. 23, 2015

This page intentionally left blank to accommodate double-sided printing.



# Contents

GS-10F-0033X

899-1, 899-IRC, 899-7, 899-7RC

- 1 Company Information**  
Name/Address/Ph/Fax/Contact
- 2 Contract Services Offered**  
Environmental Consulting Services (899-1)  
Geographic Information Systems (GIS) Services (899-7)
- 3 Customer Information**  
1a – 26
- 4 Firm Profile**  
General Description  
Sustainable Design Philosophy  
Staff Capabilities
- 5 Project Experience**  
Environmental Consulting  
GIS Services
- 6 Labor Category Descriptions**  
Summary of Duties + Minimum Education/Years of Experience Matrix  
Labor Category Hourly Rates
- 7 Labor Category Hourly Rates**  
Authorized Price List + Corresponding Contract Dates  
SCA Matrix







# 1. Company Information

**Schedule for:** Environmental Services

**Federal Supply Group:** 899

**Class:** F999

**Contract #:** GS-10F-0033X

**Contract Period:** November 24, 2010 – November 23, 2015

**Contractor:** The LA Group, Landscape Architecture & Engineering, PC

**Address:** 40 Long Alley, Saratoga Springs, NY 12866

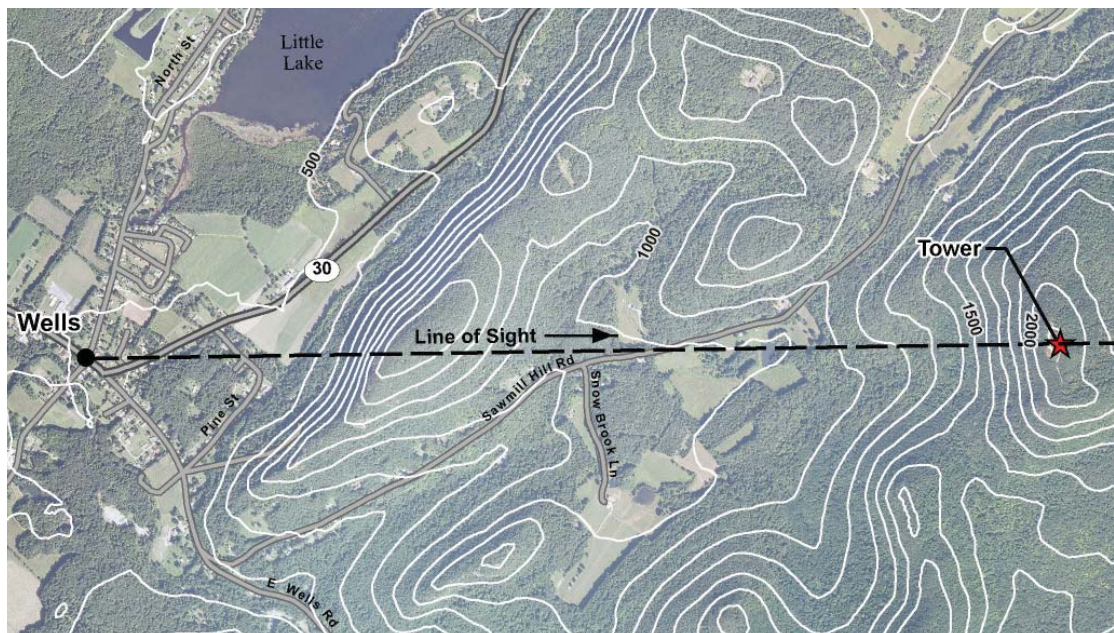
**Phone:** (518) 587-8100

**Fax:** (518) 587-0180

**Business Size:** Small Business

**Contract Administration:** Matthew T. Sterling, CFO

**Email:** [msterling@thelagroup.com](mailto:msterling@thelagroup.com)





## 2. Contract Services Offered

To support development activities of government agencies, it is necessary to comply with a wide range of rules to establish and protect the natural resources found on every project. The LA Group staff has both the necessary expertise to assess the environmental quality of a site and prepare required documentation to comply with federal mandates. This includes the capability to understand the mission of various agencies, and be able to effectively apply the regulatory standards that may be involved in project development.

### Environmental Consulting Services (899-1)

- Environmental Assessment (EA)
- Environmental Impact Statement (EIS)
- Environmental Program Project Management
- Environmental Regulation Technical Studies/  
Compliance Services
- Natural Resource Management Plans
- Endangered Species Inventory
- Watershed Analysis
- Wetland Services
- Other Environmentally Related Studies  
(Visual, Wind, Stormwater Permitting)



### Geographic Information Systems (GIS) Services (899-7)

- Natural/Historic Resource Mapping
- Land Use/Land Cover Mapping
- Viewshed Analysis
- Visual Impact Assessment/3D Modeling
- Economic Zone Mapping
- Build Out Analysis





### 3. Customer Information

**1a. Table of Awarded Special Item Number(s) with appropriate cross-reference to page numbers:** 899-1, 899-1RC, 899-7, 899-7RC

**1b. Identification of the lowest priced model number and lowest unit price for that model for each special item number awarded in the contract.** This price is the Government price based on a unit of one, exclusive of any quantity/dollar volume, prompt payment, or any other concession affecting price. Those contracts that have unit prices based on the geographic location of the customer, should show the range of the lowest price, and cite the areas to which the prices apply.

**1c. If the Contractor is proposing hourly rates a description of all corresponding commercial job titles, experience, functional responsibility and education for those types of employees or subcontractors who will perform services shall be provided. If hourly rates are not applicable, indicate "Not applicable" for this item.**

**2. Maximum Order:** \$5,000,000.00

**3. Minimum Order:** \$100.00

**4. Geographic Coverage (delivery area):** Domestic only

**5. Point(s) of production (city, county, and state or foreign country):** Same as company address

**6. Discount from list prices or statement of net price:** Government net prices (discounts already deducted).

**7. Quantity discounts:** None Offered

**8. Prompt payment terms:** Net 30 days

**9a. Notification that Government purchase cards are accepted at or below the micro-purchase threshold:** Yes

**9b. Notification whether Government purchase cards are accepted or not accepted above the micro-purchase threshold:** Will accept over \$2,500

**10. Foreign items (list items by country of origin):** None

**11a. Time of Delivery (Contractor insert number of days):** Specified on the Task Order

**11b. Expedited Delivery.** The Contractor will insert the sentence "Items available for expedited delivery are noted in this price list." under this heading. The Contractor may use a symbol of its choosing to highlight items in its price list that have expedited delivery: Contact Contractor

**11c. Overnight and 2-day delivery.** The Contractor will indicate whether overnight and 2-day delivery are available. Also, the Contractor will indicate that the schedule customer may contact the Contractor for rates for overnight and 2-day delivery: Contact Contractor

**11d. Urgent Requirements.** The Contractor will note in its price list the "Urgent Requirements" clause of its contract and advise agencies that they can also contact the Contractor's representative to effect a faster delivery: Contact Contractor

**12. F.O.B. Point(s):** Destination

**13a. Ordering Address(es):** Same as company address

**13b. Ordering procedures:** For supplies and services, the ordering procedures, information on Blanket Purchase Agreements (BPA's), and a sample BPA can be found at the GSA/FSS Schedule homepage ([fss.gsa.gov/schedules](http://fss.gsa.gov/schedules)).

**14. Payment address(es):** Same as company address

**15. Warranty provision:** Contractor's standard commercial warranty

**16. Export Packing Charges (if applicable):** N/A

**17. Terms and conditions of Government purchase card acceptance (any thresholds above the micro-purchase level):** Contact Contractor

**18. Terms and conditions of rental, maintenance, and repair (if applicable):** N/A

**19. Terms and conditions of installation (if applicable):** N/A

**20. Terms and conditions of repair parts indicating date of parts price lists and any discounts from list prices (if applicable):** N/A

**20a. Terms and conditions for any other services (if applicable):** N/A

**21. List of service and distribution points (if applicable):** N/A

**22. List of participating dealers (if applicable):** N/A

**23. Preventive maintenance (if applicable):** N/A

**24a. Special attributes such as environmental attributes, (e.g., recycled content, energy efficiency, and/or reduced pollutants):** N/A

**24b. If applicable, indicate that Section 508 compliance information is available on Electronic and Information Technology (EIT) supplies and services and show where full details can be found (e.g., contractor's website or other location). The EIT standards can be found at: [www.Section508.gov/](http://www.Section508.gov/), contractor's website or other location). The EIT standards can be found at: [www.Section508.gov/](http://www.Section508.gov/)**

**25. Data Universal Numbering System (DUNS) number:** 02-0650214

**26. Notification regarding registration in Central Contractor Registration (CCR) database:** Registered





## 4. Firm Profile

### General Description

The LA Group, Landscape Architecture and Engineering, P.C. is a Small Business Enterprise (SBE) design firm that provides environmental analysis, land planning, and civil engineering for public space planning, colleges and institutions, government projects, parks and recreational facilities, and private initiatives. Founded in 1974, The LA Group has an established reputation for excellence, which is reflected in the number of continuing client relationships that we maintain along with our numerous awards for design excellence.

Prestigious awards received by The LA Group in 36 years of business include:

- The Zweig Letter 2010 Hot Firm List
- In 2007, The LA Group was named one of the Fastest-Growing Private Companies in America by Inc. 5000.
- The LA Group was ranked the Largest Landscape Architectural Firm (2006 through 2008) and the Seventh Largest Engineering Firm (2006) in NY's Capital Region by the Business Review.
- In 2005, The LA Group was named one of the "Great Places to Work" in the region.
- The award recognizes the company's achievements in creating a positive work environment that attracts and retains employees through a combination of benefits, working conditions, and company culture.
- The LA Group was also named Small Business of the Year Capital District Business Review in recognition of the firm's growth, management strengths, and profitability over a 20-year period.



### Sustainable Design Philosophy

The LA Group is a strong advocate of environmentally sensitive design. Through over three decades of experience, the firm has learned that successful, creative designs are those that blend a concern for environmental characteristics with client program goals, aesthetic and cultural issues and project budgets. We believe that the built environment is a complex process that calls for just the right balance: manmade structures have to complement the natural site; human needs must be accommodated in an environmentally sensitive way; and form should follow function since the success of a design depends on the way an environment is used, the purposes it serves, and the access it permits the user. The firm is a member of the U.S. Green Building Council and employs LEED® Accredited Professionals.

Services include: landscape architecture, civil engineering, community and regional planning, environmental analysis, and geographic information systems (GIS). Staff have developed specialized areas of expertise in cemetery planning and design; resort and golf course design; college, university, and school design; and streetscapes, parks and trails. Area of service extends throughout the northeast and nationally in specific market arenas.

### Staff Capabilities

At the heart of The LA Group is our talented staff. The firm's unique mixture of professional and scientific disciplines allows us to provide a comprehensive approach to land planning and design. Professional staff includes licensed landscape architects, licensed civil engineers, and landscape designers.

In addition to our design staff, we have in-house natural resource scientists, certified planners, and GIS/CADD specialists, along with support staff. It is our diverse expertise that allows The LA Group to provide a comprehensive approach to land planning issues, based on an in-depth level of natural and built physical resource analysis.



This page intentionally left blank to accommodate double-sided printing.





## 5. Project Experience

Environmental Consulting

GIS Services

National Park Service (NPS) Experience

United States Forest Service (USFS) Experience



This page intentionally left blank to accommodate double-sided printing.



**GSA 899-1**

## Environmental Consulting Services

**the LA group**  
Landscape Architecture  
and Engineering, P.C.

To support development activities of government agencies, it is necessary to comply with a wide range of rules to establish and protect the natural resources found on every project. The LA Group staff has both the necessary expertise to assess the environmental quality of a site and prepare required documentation to comply with federal mandates. This includes the capability to understand the mission of various agencies, and be able to effectively apply the regulatory standards that may be involved in project development.

### Environmental Consulting Services

- Environmental Assessment (EA)
- Environmental Impact Statement (EIS)
- Environmental Program Project Management
- Environmental Regulation Technical Studies/Compliance Services
- Natural Resource Management Plans
- Endangered Species Inventory
- Watershed Analysis
- Wetland Services
- Other Environmentally Related Studies (Visual, Wind, Stormwater Permitting)

### Environmental Assessment (EA)

National Environmental Protection Act (NEPA) and State Environmental Quality Review Act (SEQRA), guide comprehensive environmental assessment necessary to support the review of a variety of projects.

#### Floodplain Mapping, National Park Service Saratoga County, NY

Provided planning and GIS services to Saratoga National Historical Park (SNHP) to prepare a GIS based map in ESRI format to illustrate the important resources in the 100-year floodplain along the Hudson River in the towns of Saratoga, Stillwater, and Easton. The mapping included a base map showing political subdivisions and the 100-year floodplain line, present land uses, present zoning classifications, and locations of future projects. This mapping was utilized by SNHP in negotiating with General Electric for PCB cleanup activities along the Hudson River.

#### VA Naval Facility Orlando, FL

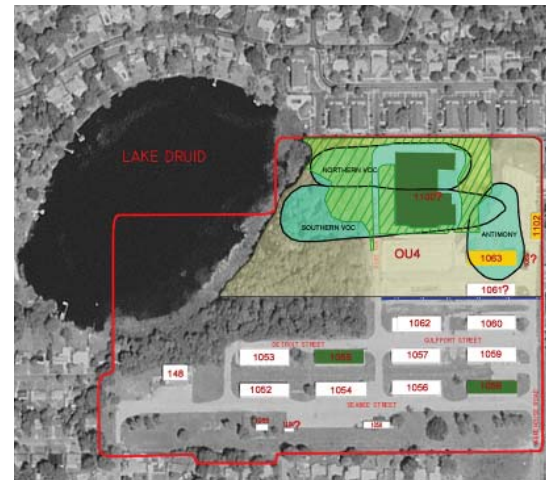
The Veterans Administration was offered an excess navy supply depot in Orlando, Florida on Lake Druid for reuse as a regional center for various training facilities and a prosthetic laboratory. The first phase of work was a review of extensive environmental records related to past and current contamination at the site by dry cleaning fluids and other wastes. Numerous buildings were determined to have been contaminated along with a large plume of subsurface contamination. Based on long-term issues of contaminated soils and possible vapor leakage into the building, any future use would require special ventilation to be constructed. It was recommended that the VA not attempt to utilize the property. Study was terminated early, resulting in a lower cost to the VA.

#### US Dept. of Veterans Affairs Charlotte, NC

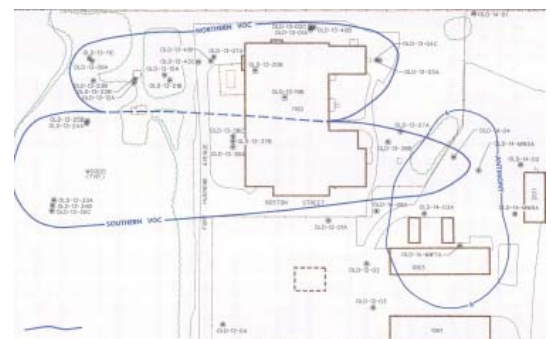
Completed a NEPA Environmental Assessment for a 10-acre parcel of land that the VA desired to develop as an out-patient clinic. Subconsultants in-



Victory Woods



VA Naval Facility, Orlando, FL



VA Naval Facility, Orlando, FL



US Dept. of Veterans Affairs, Charlotte, NC



cluded a traffic engineer and a hazardous materials firm to complete a Phase I Environmental Site Assessment. The LA Group reviewed local ordinances to determine site plan issues and review capacity of the local water, stormwater, and sewer system. Prepared a feasibility assessment for the project and identified the critical path issues related to development of the site. The NEPA EA was completed and a Findings of No Significant Impact was prepared for the project.

### **Fire Island National Seashore West Entrance Islip, NY**

For the National Park Service (NPS), a NEPA EA was prepared to evaluate alternatives for a visitor contact station. A new visitor contact station was needed in between the Fire Island National Seashore and the Robert Moses State Park. This visitor contact center was also a control point for vehicles entering the National Seashore in order to access private land holdings. Three alternatives were evaluated and a public outreach meeting was held. Special issues at this site included numerous historic buildings, a large state park, rare bird life and unique wetland features. The review process was successfully completed and a Findings of No Significant Impact was filed.

### **US Dept. of Veterans Affairs Las Vegas, NV**

A site evaluation was completed in order to assess suitability of a parcel for development of a Veterans Affairs Regional Office (VARO). The VARO in this case was to include Veterans Benefits Administration and Veterans Health Administration. Evaluation of potential impacts and measures proposed to mitigate such impacts were identified for environmental resources including soil, topography, air, surface and groundwater, cultural resources, aesthetics and visual resources, land use, vegetation and wildlife. The LA Group reviewed local ordinances to determine site plan issues and review capacity of the local water, stormwater, and sewer system. Prepared a feasibility assessment for the project and identified the critical path issues related to development of the site. The NEPA EA was completed and a Findings of No Significant Impact was prepared for the project.

### **Rehabilitation of Rest Areas, NYS Route I-87 Essex County, NY**

Developed four new rest areas along Interstate 87 in New York State that required obtaining permits from the US Army Corps of Engineers, Federal Highway Administration and Adirondack Park Agency. Site inventory work included soils, wetlands, vegetation, and rare and threatened endangered species. An evaluation under National Park Service guidance to assess impacts on the wilderness system was compiled in order to obtain the Federal Highway Administration NEPA compliance.

### **MFS Fiber Optic Cable Installation along the NYS Thruway New York State**

Prepared permit applications, the Environmental Protection Manual, and managed fieldwork for installation for six cable fiber optic bundles from Bronx to Chautauqua, New York. The LA Group completed route selection to choose the side of the Thruway ROW in which to build the corridor, and performed wetland delineation and water resource assessment along half the route. An erosion and sediment control plan for the project was prepared, and the LA group staff provided environmental protection oversight for the eastern portions of the project including directional bores for six large rivers. Each bore was between 0.5-0.75 miles in length.

### **Environmental Impact Statement (EIS)**

Large, complex projects frequently require the preparation of a comprehensive analysis document that evaluates both impacts and mitigative measures. The decision document used by government agencies attempts to determine the most appropriate balance between environmental impact and project benefits.



Fire Island National Seashore West Entrance Station



Fire Island National Seashore West Entrance Station



Rehabilitation of Two Rest Areas, NYS Route I-87



MFS Fiber Optic Cable Installation (cable plows)



## Adirondack Park Visitor/Interpretive Center Site Feasibility Study Paul Smiths, NY

Development and performance of three-tiered site selection process to identify potential sites for the Adirondack Park Agency's (APA) visitor interpretive center. Project scope also included comprehensive environmental impact analysis and EIS preparation. The EIS scope included identification of critical project issues and design of mitigation measures for wildlife displacement, traffic increase, human interference in the natural setting, and vehicular noise and emissions. Site selection was focused on finding locations with excellent natural attributes such as mature forest, varied wetland habitats, and unique geological features. The selection process involved 70 sites.

## Carousel Center Syracuse, NY

Preparation of a comprehensive EIS for a 1.4 million sq. ft. retail and commercial center with community access space on a 50-acre site. Multi-level, climate controlled facility was constructed in three phases in a deteriorated industrial area. Scope included wetland delineation to meet NYSDEC and ACOE requirements, analysis of impacts of site clearing on existing wetlands, and evaluation of potential site contamination from long-term industrial, manufacturing and underground fuel storage use.

## Luther Forest Technology Campus Conceptual Master Plan, and EIS Malta-Stillwater, NY

Developed a conceptual master plan for the creation of a nano-technology center on a 1,350-acre parcel. The goal of the master plan was to build an aesthetically pleasing yet functional technology park that has minimal environmental impact. The LA Group led site planning and visual analysis efforts for the EIS for the proposed 1,350-acre nano-technology center. Wetland mitigation, access road stormwater facilities, trail design and layout and permitting for transmission lines are part of the ongoing scope.

## Saranac Co-Gen Facility, Plattsburgh Wetland Plattsburgh, NY

Provided environmental permitting and environmental protection services for Saranac Co-Generation including a 9.7 mile electric transmission line, and a portion of 22 mile natural gas line. Completed wetland delineation for co-generation site and power line corridor. Assisted in the preparation of an EIS and the permit application to the ACOE and NYSDEC and developed an environmental protection plan for construction of power line, including special plans for protection agricultural resources. Work included visual analysis for the transmission line, co-generation plant, and I-87 crossing, and an extensive 16-acre wetland mitigation creation and enhancement project.

## Tri-Lakes 46 kV Transmission Line Adirondack Park, NY

Assisted the New York Power Authority with the permitting and licensing of 26 miles of transmission line through the Adirondack Park. Services under this contract included route analysis to determine a preferred and alternate route that avoids the most critical and sensitive park resources; environmental studies; preparation of an Environmental Management and Construction Plan (EMCP); preparation of a Class A Regional Project Application under Adirondack Park Agency (APA) regulations; and support for miscellaneous pre- and post-construction activities. Scope of services included determining a cross country route for the corridor using visual analysis and photographic simulation and assistance with the implementation of the permit process. The firm also prepared permit applications for the NYSDEC, and assisted in the preparation of an EIS.



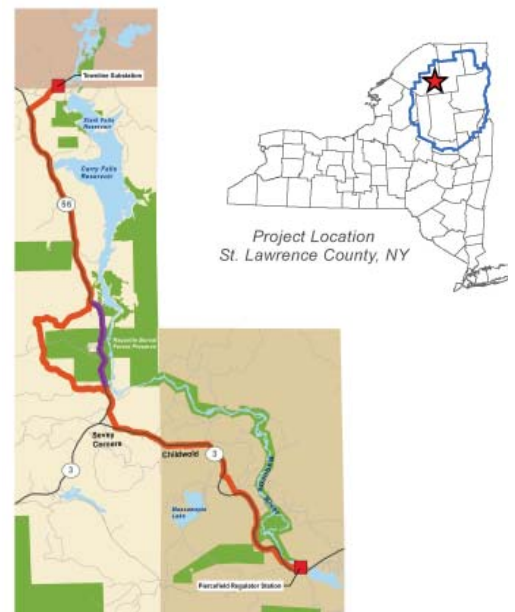
Carousel Center



Luther Forest Technology Campus



Plattsburgh Wetland



Tri-Lakes 46 kV Transmission Line

**The Orchards at Cornell University  
Ithaca, NY**

Preparation of comprehensive generic EIS for 30-year development program of 600-acre campus area. Scope included analysis of biological inventories and character assessment; existing and proposed land uses and land use ordinances; wetlands identification and delineation to state and federal standards; cultural resources to identify archaeological and historic components; existing conditions and future needs of utilities/infrastructure systems; terrestrial and aquatic ecology; pedestrian environment; transportation systems; water systems and resources; soils and geology; noise; use and conservation of energy resources; and growth-inducing factors; and determination of impacts, and recommended mitigation measures and development alternatives.

**Six Flags Theme Park's Great Escape Hotel and Indoor Water Park  
Queensbury, NY**

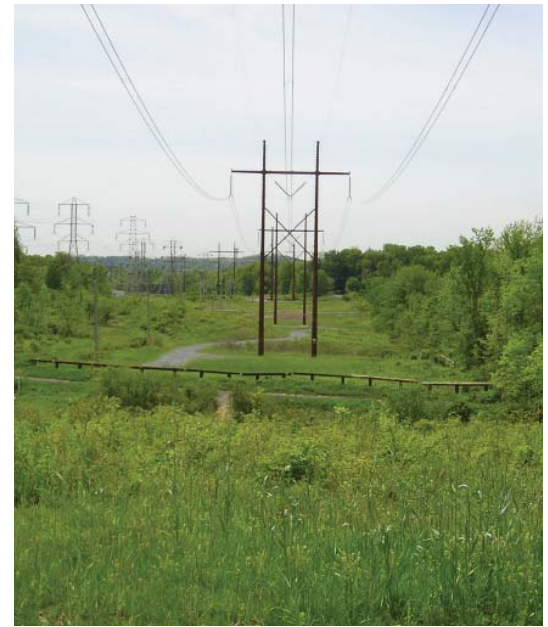
Environmental permitting and site planning for \$40 million hotel and parking expansion. This process included preparation of a EIS. Part of local authorization included the creation of vertical zoning to allow for future sitings of tall amusement attractions. A regional digital elevation model was prepared to determine the best position for tall attractions that could vary from 115-200 feet tall, while minimizing visual impacts to other recreational areas. Ongoing work typically involves site planning and permitting for the addition of amusement park rides.

**Washington County Jail  
Fort Edward, NY**

Working with an architect, The LA Group completed full environmental assessment services, including SEQRA review document preparation, civil engineering, and landscape architectural services. A county-wide alternative site selection study was completed to select the final site in Fort Edward, near the existing court house. An EIS was used to present all the information to the decision makers.

**Niagara Mohawk Power Corporation  
Schodack, NY**

Provided routing studies with emphasis on visual effect, and prepared the EIS for a 3.4 mile 115 kV transmission line. Permit application to the NYS-DEC for stream and wetland crossings were completed. A special study on the environmental fate of the right-of-way herbicides was prepared to support the EIS. Public outreach included meeting with neighborhood groups and informal hearings in a science fair format to inform the public about the project. Special attention to Electro Magnetic Fields (EMF) issues was required.



Niagara Mohawk Power Corporation



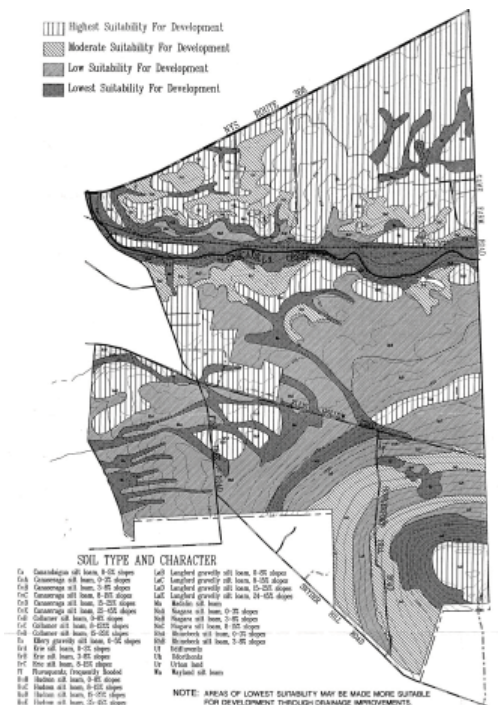
Six Flags Great Escape

**Environmental Program Project Management**

As a part of decision making, government is in the position of evaluating projects under their control and proposed by the private sector that require both an assessment of environmental impacts and preparation of plans for operation of a facility or event. These evaluations set forth specific management objectives and projects to improve or update facilities.

**Gore Mountain UMP/EIS (1987 UMP/EIS and 1994 & 2002 Master Plan and UMP/EIS) and Project Implementation  
North Creek, NY**

Comprehensive inventory and analysis of natural resources, infrastructure and built physical characteristics, program analysis, and master plan preparation for up to 30 miles of ski trails at Gore Mountain. Goals were to increase user capacity and satisfaction, remedy safety deficiencies, increase snowmaking capabilities and improve market position. Scope included user survey, design of base lodge renovations and new on-mountain lodges, improvements to parking and site circulation with new drop-offs, six miles of new ski trails, and upgrade of all lifts. Project also involved comprehensive engineering services for the snowmaking pipeline to the Hudson River,



The Orchards at Cornell University



preparation of an EIS and Adirondack Park Agency permit, coordination of the review process, project representation at public hearings, and preparation of the unit management plan.

### **Whiteface Mountain UMP/EIS (1987 and 2002) Wilmington, NY**

The project involved preparation of a comprehensive Unit Management Plan (UMP) for improvements to Whiteface Mountain Ski Area. A UMP is an Environmental Impact Statement that leads to the operation of a facility. As an EIS, a comprehensive inventory of site characteristics is necessary. The site inventory includes a summary of ongoing activities, past development, historic structures, soils, geologic resources, water resources, vegetation and wildlife, inventories, and visual resources. The Bicknell's Thrush is found in red pine stands at elevations between 1,600-2,800 feet and a detailed survey for this bird was completed. Future development plans were fully described and potential environmental impacts were assessed. Appropriate mitigative measures were identified in order to avoid or mitigate potential impacts. The LA Group was responsible for plan development, project inventory mapping and report graphics.

### **Mt. Van Hoevenberg UMP/EIS (1996) Lake Placid, NY**

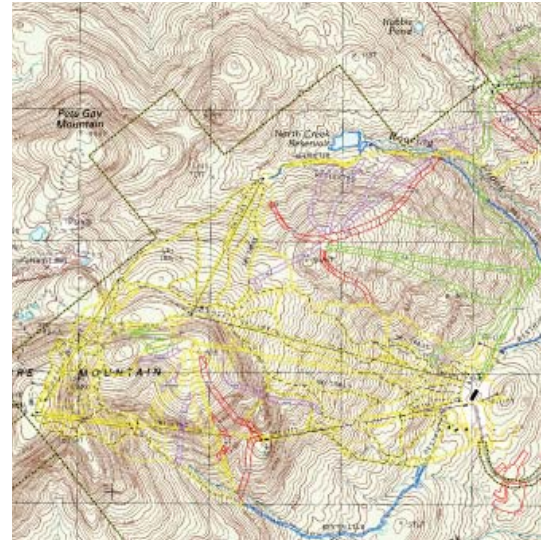
The project involved the master plan for improvements to the facility as well as preparation of a UMP/EIS. The project included upgrades to the cross-country trails and stadium, biathlon trails, parking lots, snowmaking for the trails, renovation and additions to structures, lighting of some trails and the replacement of the luge and bobsled runs with a combined luge/bobsled truck. The scope of consultant work included assessment of the facility based on its environmental setting with an inventory of existing facilities, development of an organizational structure and management objectives, identifications of needs and priorities for maintenance and operational and capital budgets for implementation of a five year plan.

### **Visitor Support Facilities At XIII Olympic Winter Games Lake Placid, NY**

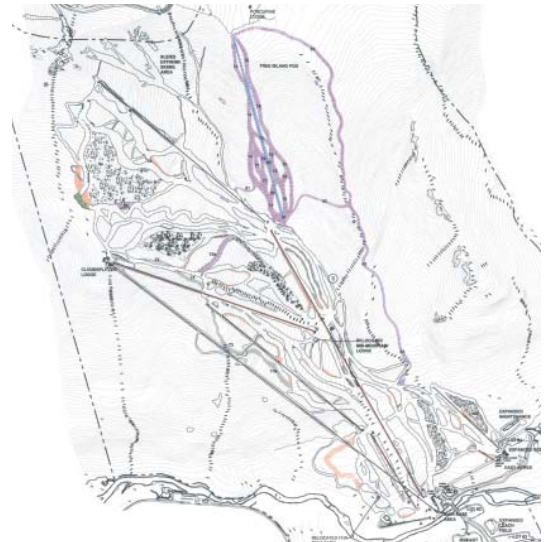
Comprehensive site master planning, design, construction documents, cost estimating, construction administration and Adirondack Park Agency permitting for spectator support facilities at locations for cross-country skiing, bobsled, luge, biathlon, slalom and ski jump. Facilities included concession stands, comfort stations, spectator seating, parking, lighting, fencing, emergency stations, TV broadcasting and staging areas, graphics and signage. Scope also included site design of opening ceremonies arena for easy dismantling after one-time use and for conversion into permanent athletic complex for high school and equestrian center. Site design for speed skating oval involved conversion of school athletic fields and design for temporary and permanent spectator seating, main entrance, ticket/ information center, administrative and maintenance space, pedestrian and vehicular access, and snow removal. Project also included site design for Olympic Administrative Center and for new maintenance garage which was taken over by the town as a permanent facility.

### **Woodstock 1994 Festival Saugerties, NY**

Led the comprehensive environmental analysis for an 800 acre site to identify wetlands, watercourses, and rare, threatened, or endangered species. Prepared site plans for layout of temporary facilities, water supply, wastewater collection, food service area, campgrounds, stage site, and backstage area. Prepared permit application and the necessary environmental assessments to support permit approvals. Provided operational support for the festival and supervised restoration of the property following the festival.



Gore Mountain UMP



Whiteface Mountain UMP



Woodstock 1994



Woodstock 1994



**Woodstock 1999 Griffis Air Force Base  
Rome, NY**

Assisted project development team in the preparation of permit application and site plans for the temporary facilities at the project site. Prepared the site restoration plans and supervised the restoration of the property.

**Gas Transmission Systems  
Throughout New York State**

Currently (1995-2010), the LA Group provides on-going services including stream restoration and streambank improvements permitting for wetland crossings and stream crossings, and provision of personnel to oversee environmental protection activities during construction or maintenance projects for the entire gas line from the St. Lawrence River to Long Island Sound. In 1996 and 1997 The LA Group completed a comprehensive re-delineation of water resources on the Right of Way.



Gas Line Stream Stabilization

**Lake George Substation EIS and APA Application**

A standard substation was proposed for a location near Prospect Mountain Highway to support electric supply in the vicinity of Lake George Village, New York. A DEIS was required and a Class A Regional project application was prepared due to the height of structures over 40 feet in the Hamlet area.



Pipeline Repairs

**Riders Ranch Harley Davidson's 95th Anniversary Reunion  
Waukesha County, Wisconsin**

Riders Ranch was planned and designed as alternative housing for 10,000 festival attendees and developed as a self sufficient "city" featuring stores, vendors, signage system, sanitary facilities, potable water supply, solid waste disposal, heliport, site security, and emergency response and medical treatment.

**Riders Ranch Harley Davidson's 100th Anniversary Reunion  
Waukesha County, Wisconsin**

The temporary camping venue featured tent camping sites; RV hook-ups for electricity and water; hot showers; portable toilets; bank machines; a convenience store; restaurants and food vendors; live bands; 24-hour movie theater, arcade and billiards; and competitions and bike shows.



Rider's Ranch Aerial

**Environmental Regulation Technical Studies/Compliance Services**

As part of the development of guidance or regulation, technical support documents are often required. These reports evaluate the expected or desired outcomes as a result of implementation of revised rules. Support documents may include small business impact evaluation and costs of regulation evaluations.

**Tower Policy  
Adirondack Park**

Assisted the Adirondack Park Agency in the review of their existing tower policy. Prepared background document that assembled regulatory elements of state and federal rules related to telecommunication facilities. Special attention was focused on telecommunication impacts on wildlife and issues to wilderness character. Prepared revised draft policy for review by agency staff.

**Lake George Park Commission Stormwater Rules**

Completed a comprehensive review of LGPC stormwater runoff rules and recommended necessary technical adjustments to streamline the process. Reviewed issues related to environmental thresholds and made adjustments to the regulation to provide clearer separation of exempt projects and to formalize preferred best management practices for development on small sites.



Rider's Ranch Harley Parking Diagram



## Natural Resource Management Plans

These plans assemble diverse data sets that are utilized to facilitate development or site selection. Information for projects is often a mix of previously gathered data such as county soils surveys, along with site specific data.

### Regional Site Selection Study

#### Albany and Saratoga County, NY

To support a development project it was necessary to find a site suitable for mitigation wetlands development. An evaluation of approximately four dozen properties was completed using regional mapping, real property data and aerial photography to identify candidate sites.

## Endangered Species

Compliance with the Endangered Species Act requires assessment of a project's potential impact on the species or its habitats. This most often requires the evaluation of the plant communities of a site as a part of project planning in order to assess habitat quality or use of the property by a species.

### Albany and Saratoga County Pine Bush

#### Saratoga County, NY

Completed site inspection for Karner blue butterfly habitat in the Towns of Wilton, Milton, Saratoga, Saratoga Springs, and Guiderland for numerous development projects. Selection criteria included parcel size, soils characteristics, depth to seasonal highwater table, vegetation cover and local zoning. Habitat searches included site inspections during May and July in order to identify both plants and butterfly. Frosted Elfin, a rare butterfly, was searched for at the same time.

### Fox Run Neighborhood Subdivision

#### Wilton, NY

Completed a successful lupine transplant project at the Fox Run subdivision in 1991, using conventional tree spades.

### Wilton Wildlife Preserve and Park

#### Wilton, NY

Resource inventory, GIS mapping and master plan for 2,000-acre preserve undertaken with the Nature Conservancy, NYS Department of Conservation and the Town of Wilton. The project intent was to identify and set aside key parcels of land for resource protection, including areas of endangered species habitat, such as the Karner blue butterfly. Data layers included land use, vegetative cover types, wetlands and bog habitats.

### Lake George, NY

Completed searches of littoral zone for *Isoetes macrospora*, a rare plant found on limestone or in shallow, rocky embayments of Lake George.

## Watershed

Watershed studies are utilized to plan future reclamation projects on lakes or waterways. These studies may also be used to examine regional issues related to land use.

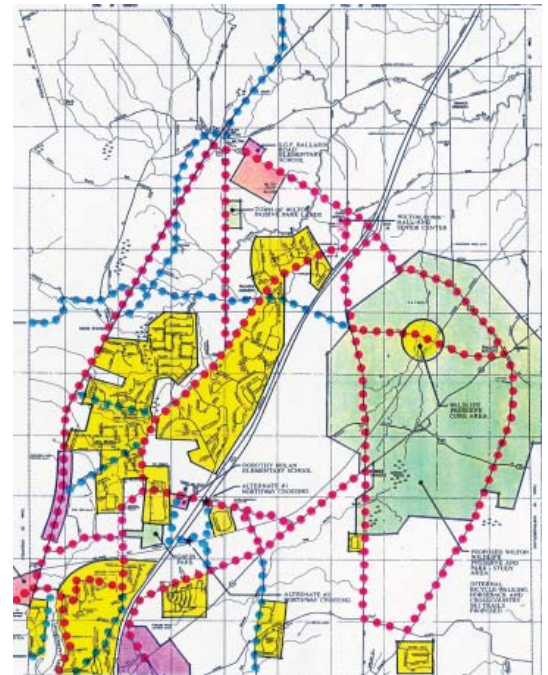
### Saratoga Lake Watershed Protection and Management Plan

#### Saratoga, NY

Developed a Watershed Management Plan that included evaluation of Saratoga Lake's existing water quality conditions, recreational activities on the lake, and present lake management strategies such as the control of invasive aquatic vegetation. To predict future nutrient loading to the lake, a build-out analysis of septic systems within 200 feet of streams was completed. This analysis was used to determine which systems were at risk of failure. Recommendations included considering the sewer district boundary as an urban growth limit and re-evaluation of local zoning codes to better reflect soil quality.



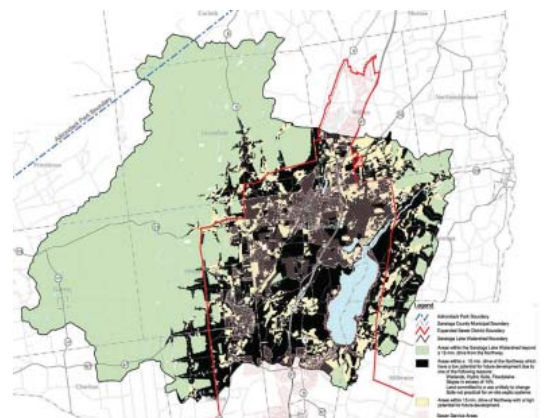
Karner Blue Butterfly



Wilton Wildlife Preserve Trail Mapping



Wilton Wildlife Preserve



Saratoga Lake Watershed



## Lake Placid Boating Study

### Lake Placid, NY

Analysis and evaluation of existing boating traffic conditions of bay on Lake Placid including observation of numbers and types of boats. Scope also included projecting future boat traffic of proposed recreational and residential development with docking facilities.

## Tupper Lake Boating Study

### Tupper Lake, NY

Existing boating use analysis, documentation preparation and expert testimony on impacts associated with proposed subdivision development. Scope also included evaluation of increased boating traffic on lake water quality.

## Lake George Eurasian Watermilfoil Control

### Lake George, NY

Comprehensive environmental analysis and planning services to assess the use of the chemical SONAR to control Eurasian watermilfoil. Scope included complete data summary of macrophyte inventory for bays to be treated; thorough analysis of SONAR® Fluridone impacts on non-target plant and animal species; and management plan for SONAR use and applications.

## Wetlands

Wetland analysis is a fundamental inventory to support land planning for any scale of project. This analysis includes using the most recently approved state, federal or regional specific delineation procedures for the identification of wetlands. Staff has a comprehensive knowledge of the federal regulatory process.

## NYS DOT Wetlands Term Contract Regions 1-7 And 9

### New York State

Comprehensive wetlands identification, analysis, mitigation design and permitting for various locations throughout New York State.

## Whitney Estates

### Adirondack Park, NY

Comprehensive master plan including biological and wetlands survey, for 30,000 acres of privately-owned property located in the Adirondack Park. Resource mapping included evaluation of soils, forest cover, wetland identification, the search for rare, threatened, or endangered species, and lake inventory.

## New Scotland Avenue Emergency Replacement NYS DOT

### Guilderland, NY

Provided wetland delineations and emergency authorizations for emergency stabilization and repair of a major connector road near Albany, NY. Completed wetland delineation, environmental analysis, and developed emergency analysis.

## Other Environmentally Related Studies

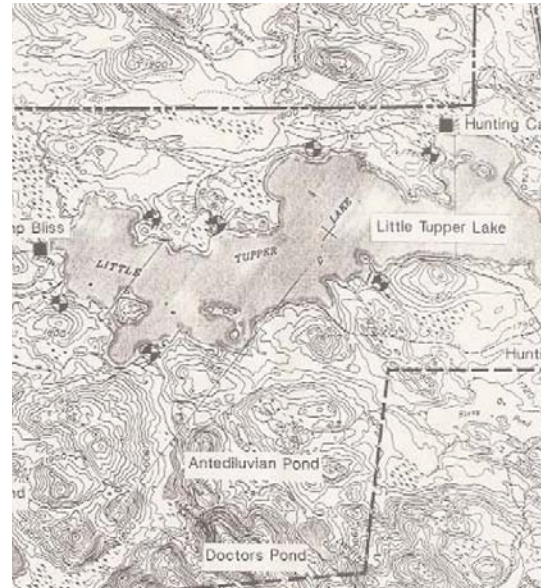
These studies include site specific or regional inventory of visual quality or resources such as farmlands or forest that may be regulated by numerous communities. Supporting local communities in the review of complex development related to wind development is a typical project.

## Visual

Visual impact analyses have been completed for numerous projects including wireless communication, resort development, landfills, amusement parks, zoning, national parks and scenic vista protection. The process for visual impact analysis is similar for all projects and involves a combination of regional mapping using digital elevation models (DEM), collection of field data using a Geographic Positioning System (GPS) data logger, photography, and



Whitney Estates, Wetlands



Whitney Estates, Survey Map



Visual Impact Fieldwork



Visual Impact Analysis (meteorological balloon preparation)



careful observation of the visual setting. Frequently, multiple target balloons are flown at a site in order to assist in the establishment of the area of disturbance for the visual simulation.

To develop the visual simulation, the position of target balloons and photographer are located using GPS. This information is then incorporated into the DEM of the site and region. The DEM can then be overlaid onto a photograph to establish critical heights and visibility of the proposed structure. A proposed structure for a photographic simulation can be a scaled illustration or a photograph of a similar structure. These images are then fitted into the DEM to create a scaled simulation. Once these steps are complete, colors, backgrounds, and shadows can be added to the photograph to create a realistic image.

## Wind

### Jordanville Wind and Hardscrabble Wind Projects

Provided assistance to towns in the SEQRA review of two commercial wind farms. The Applicant in both projects was Iberdrola Renewables. The LA Group was the lead for technical review of all aspects of the wind farm and assisted in the administration of the SEQRA process. Technical review included evaluation of the visual, groundwater, cultural resources, community character, sediment and erosion control during construction, transportation, sound, wildlife, and wetland impacts.

Based on the technical review and changes in both projects, Supplemental EIS's were required, reviewed, and modified for the Responsiveness Summary in the preparation of the FEIS. The Findings Statements were prepared. The major issues centered on visual impacts and community character impacts. The LA Group also assisted in the discussion of permit conditions with the Office of Parks, Recreation, and Historic Preservation and the Public Service Commission on behalf of the Towns.

## Stormwater Permitting

All federal agencies are required to comply with the provisions of the Clean Water Act, which includes stormwater discharges.

Stormwater planning is a fundamental part of the practice of landscape architecture and land development planning. This has been further integrated as a result of the Phase I and Phase II Environmental Protection Agency Stormwater rules. These rules regulate construction activities, post-construction, operation of municipal separation storm sewer systems (MS4), and non-traditional MS4s (colleges, large campuses).

Permitting involves analysis of site conditions, inventory of stormwater management facilities, modeling of stormwater flows, and planning of treatment devices. Many of the preferred treatment devices involve wetland basins in order to polish the stormwater flow. These basins require detailed analysis of flow and knowledge of plant material in order to effectively treat stormwater.

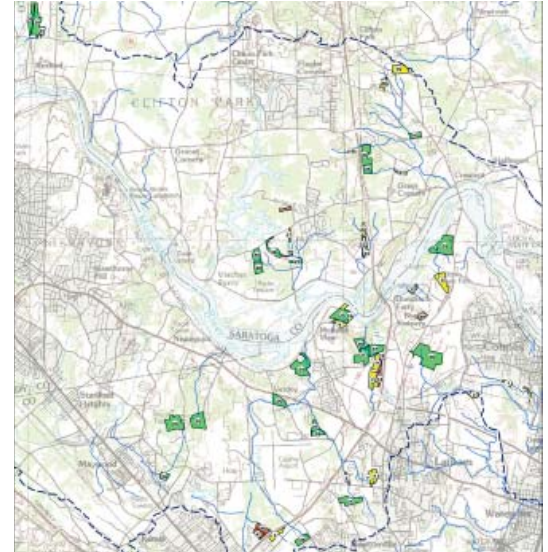
As part of stormwater permitting, planning and phasing of development to meet disturbance limits is necessary. This frequently includes establishment of temporary construction sediment basins.

Federal facilities as a campus unit will fall within a non-traditional MS4 facility category within a larger municipality.

Planning for on-site management of stormwater discharges within the context of the downstream neighborhood is an issue that frequently has to be addressed by retrofitting discharge swales with rip-rap or other velocity control devices. Many other methods are available to manage and improve the quality of stormwater.



Wind Farm



Regional Site Selection Study



Stormwater Basin Construction



Stormwater Basin Construction

This page intentionally left blank to accommodate double-sided printing.





**GSA 899-7**

**Geographic Information System (GIS) Services**

**the LA group**

Landscape Architecture  
and Engineering, P.C.

**Geographic Information Systems (GIS)** technology has changed the way government agencies, communities and private firms deal with spatial information. A fully developed GIS can analyze data to undertake a wide range of evaluations, measurements, comparisons, and simulations, and display them in both graphical and statistical form. For over 21 years, The LA Group has utilized ESRI's ARC/INFO workstation and ArcGIS software, the most complete set of tools for undertaking comprehensive spatial analysis.

Our GIS studio is operated by professionals who also have backgrounds in landscape architecture, planning, and environmental studies. We are capable of designing and producing high quality maps in both hard copy and digital format for site planning, site analysis, resource management, and community planning. The interdisciplinary nature of The LA Group, combined with our use of these powerful and flexible technological tools, allows us to take on a diverse range of planning and design problems, and develop creative solutions to meet specific client needs.

#### **GIS/CADD/Computer Capabilities**

- Natural/Historic Resource Mapping
- Land Use/Land Cover Mapping
- Viewshed Analysis
- Visual Impact Assessment/3D Modeling
- Economic Zone Mapping
- Build Out Analysis

#### **Great Escape Theme Park Queensbury, NY**

As part of the Environmental Impact Statement describing the anticipated long-term improvements to the Park, GIS was used to create vertical zoning. Areas of the Park were evaluated to determine the height of attractions that could be sited without impacting other nearby recreation areas. Four levels of vertical zones were established for attractions between 115-199 feet.

#### **Adirondack Park Regional Assessment Project Adirondack Park, NY**

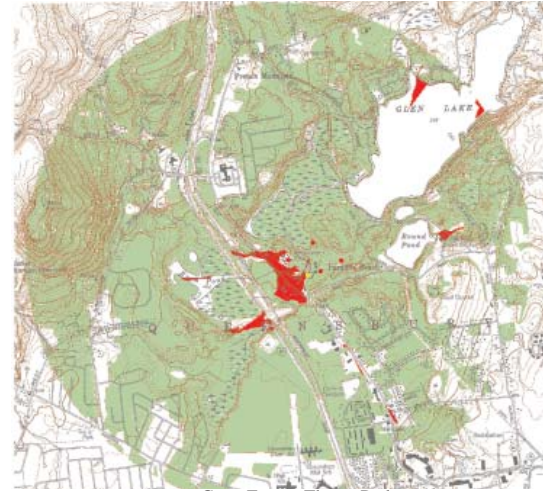
Coordination of the consultant team consisting of three firms for a comprehensive socio-economic and infrastructure assessment of 103 communities over a six million-acre region. Determination of data types and categories utilizing data management and synthesis, development and organization of interim and final report draft.

#### **Comprehensive Master Plan Town of Saratoga, NY**

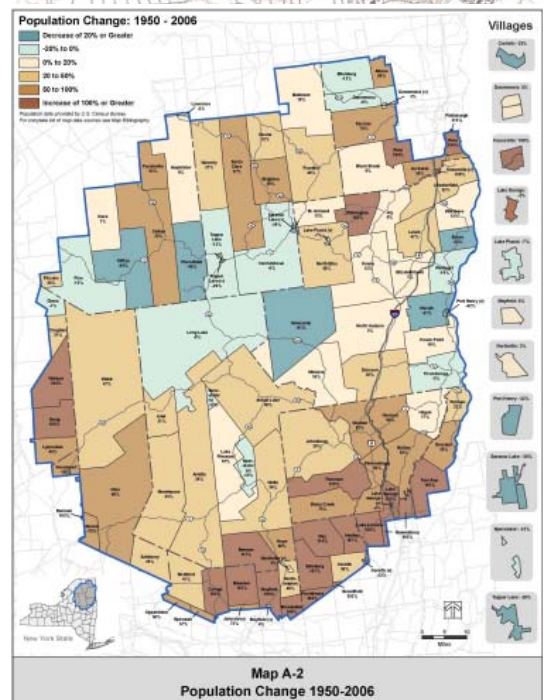
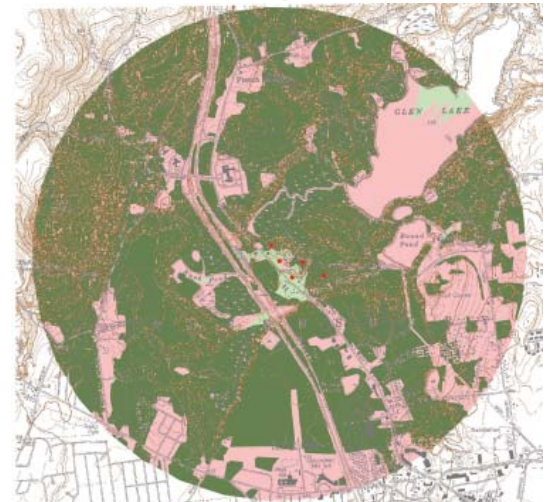
Comprehensive Master Plan update including coordination with zoning ordinance and SEQR compliance. Scope included facilities inventory, issue identification, public participation, economic analysis, GIS mapping and plan development.

#### **Saratoga County Empire Zone Saratoga County, NY**

The Empire Zones are designated areas in most New York counties that have been identified for economic development. Each property is identified and site data such as size, tax parcel, zoning, wetlands, streams, and other relevant data is compiled and tracked in GIS.



Great Escape Theme Park



Map A-2  
Population Change 1950-2006  
Adirondack Park Regional Assessment Project (APRAP)



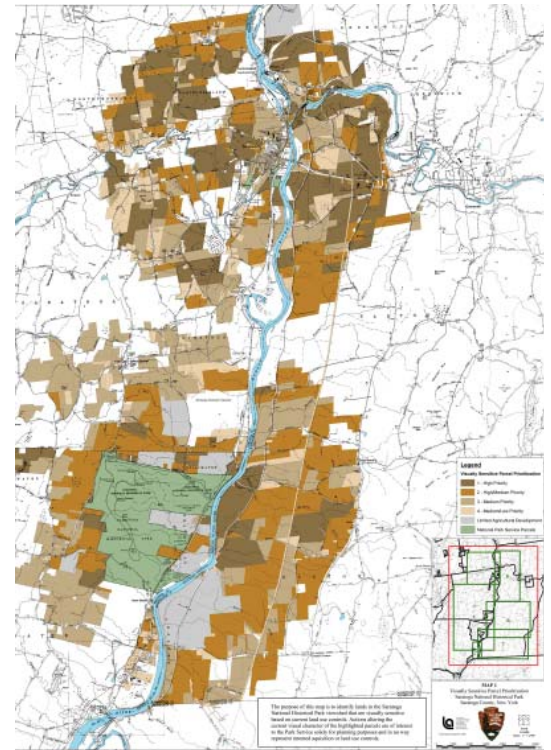
**Saratoga National Historic Park  
Saratoga, Schuylerville and Stillwater, NY**

The Old Saratoga region was the location of the Battles of Saratoga, internationally acknowledged for its impact on the history of the United States and the world as the “turning point of the Revolution” in 1777. Within its boundaries are historically significant battlefield and battle related sites including: the Field of Grounded Arms, where the British Army surrendered to American forces after the Battles of Saratoga, the General Philip Schuyler House and the Saratoga Monument, a 155-foot tall granite obelisk, located within the 18th-century lines of defense in the Village of Victory.

A project was completed to identify areas of the local vista that were of critical importance to the historic setting of the battlefield. A digital elevation model was constructed from mosaiced United States Geological Survey data to model the Zone of Visibility around the Park. The map has since been used by local communities as part of the review of various wireless communication towers.

**Open Space Institute (OSI)-NL Industries, Tahawus Mines  
Town of Newcomb, NY**

Prepared comprehensive GIS-based resource maps for a 9,646-acre parcel for OSI (the historic area within that parcel was approximately 400 acres) to facilitate development of a conservation easement and land preservation plan. Property included a historic home, lime kiln, blast furnace, and former employee homes from the mining era. Resource maps included water, vegetation, wetland resources, and historic buildings or areas.



Saratoga National Battlefield

**Tri-Lakes 46 kV Transmission Line  
Towns of Piercefild, Colton, and Parishville, NY**

Assisted the New York Power Authority with the permitting and licensing of 26 miles of transmission line through the Adirondack Park. Services under this contract included route analysis to determine a preferred and alternate route that avoided the most critical and sensitive park resources; environmental studies; preparation of an Environmental Management and Construction Plan (EMCP); preparation of a Class A Regional Project Application under Adirondack Park Agency (APA) regulations; and support for miscellaneous pre- and post-construction activities. Scope of services included determining a cross country route for the corridor using visual analysis and photographic simulation, and assistance with the implementation of the permit process.



Tri-Lakes 46 kV Transmission Line

An Environmental Impact Statement was prepared to support the siting of a new transmission line to reinforce power supplies in three communities of the Adirondack Park. Comprehensive resource mapping of alternative routes including wetland and stream location collected by use of Geographic Positioning System (GPS) data logger were prepared. Photographic simulations of changes in the roadside clearing were also completed.

**Ski Bowl Building Simulation  
North Creek, NY**

For the proposed Ski Bowl Village, a photographic simulation of the potential view of a project structure from New York State Route 28 was prepared. To develop the photographic simulation, a step process (also used to simulate views of wireless communication towers) is utilized:

- Preparation of Zone of Visibility Map
- Field Analysis with Target Balloons
- Render a Building Using 3-D Modeling Software
- Place the Building into the Digital Elevation Model to Establish Height Relationship
- Prepare Photographic Simulation Using Existing Conditions Photograph and Remove Trees or other Elements in a Photographic Rendering Program



Ski Bowl Building Simulation

## Reclaiming the Hudson: The Saratoga County Riverscape Project Saratoga County, NY

The Saratoga County Riverscape Project is a joint effort of six towns - Moreau, Saratoga, Northumberland, Stillwater, Halfmoon and Waterford; four villages - Schuylerville, Victory, Stillwater and Waterford; and one city - Mechanicville. Working collaboratively with ten municipalities, the project identified more than 35 projects along the Hudson River and Champlain Canal to make these waterways more accessible to both residents and visitors. The project provides an array of opportunities that will ultimately result in a regional waterfront revitalization plan and economic development strategy to promote a better quality of life for residents and a sustainable economy for the benefit of future generations. A GIS map using a digital elevation model and shaded relief was prepared to show the projects in the context of the Hudson River/Champlain Canal setting.

## International Paper – Ticonderoga Paper Sludge Landfill Ticonderoga, NY

Conducted GIS analysis and related field work including a visual site assessment to complete a visual analysis for the expansion of the International Paper Ticonderoga Paper Sludge Landfill for inclusion in the DEIS and APA permit application. The location of the landfill in a significant historic area made building an accurate Digital Elevation Model and photographic simulations an important part of this study. GIS was critical for this detailed visual assessment.

- Use of GIS for Detailed Visual Assessment
- Working with multiple agencies
- Preparing documentation for Section 106 Historic Preservation Act Determination
- Assessment of Landscape Position of a Large Facility
- Addressing Visibility of Development around Historic Facilities

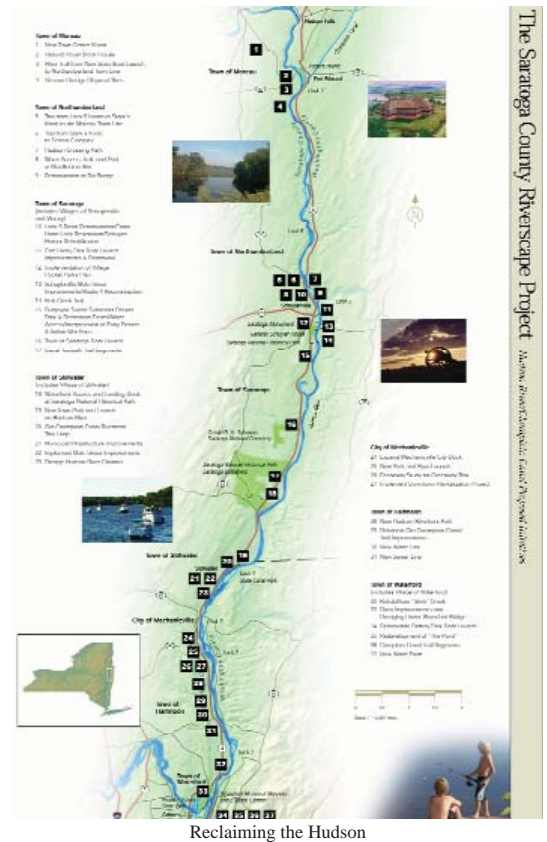
## Wireless Telecommunications GIS Photographic Simulation New York State

The LA Group has worked for all major commercial wireless telecommunication companies along with utility companies and police agencies in the evaluation of tower sites. Many tower site evaluations included assessment of visual impacts to historic or natural areas. The process includes preparation of zone of visibility mapping by the construction of a digital elevation model (DEM). Once a DEM is built, a vegetation overlay is constructed using aerial photography or vegetation mapping from various agencies.

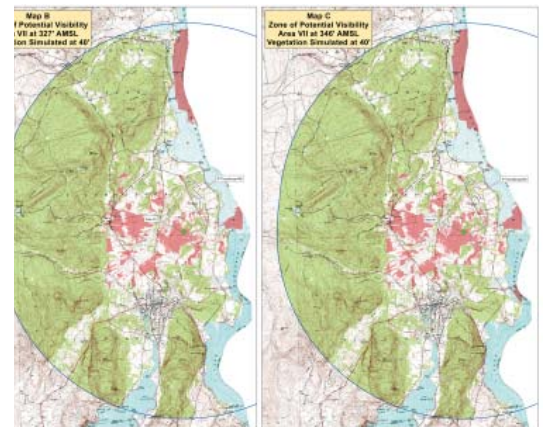
These data are then used to select locations of photographic simulations that involve superimposing realistic images of towers into photographs of the area of interest. By using a DEM and taking photographs from known points determined by use of geographic positioning systems (GPS), very accurate simulations are prepared. These are used by reviewing agencies to determine the visual impacts of a proposed project.

## Sewer District Evaluation Saratoga County, NY

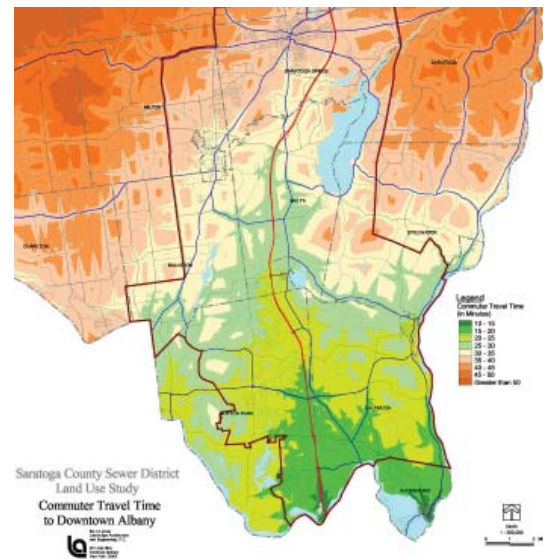
Scope of work included creation of a base map in GIS, delineation of watershed boundaries for trunk sewers and projection of future population trends for each trunk sewer service area. To estimate population trends, a travel time model was developed to establish the probable boundary of growth area within 15 minutes of I-87 and inside the sewer district. This was followed by region growth potential in the sewer district, by combining information on land development suitability, travel time from the interstate, underdeveloped lands, zoning, and sewer district boundaries.



Reclaiming the Hudson



Ticonderoga Paper Sludge Landfill



Sewer District Evaluation

This page intentionally left blank to accommodate double-sided printing.





## 6. Labor Category Descriptions

LABOR CATEGORY SIN Numbers: 899-1, 899-7	Minimum Education	Min. Yrs of Exp	GSA Base Hourly Rate (Year 1)	Summary of Duties
<b>Principal</b>	BA/BS LA License	20	\$188.81	Provides QA/QC and ensures project completion. Guides complex projects and demonstrates advanced technical knowledge and problem solving skills to implement sustainable site development and management.
<b>Senior Landscape Architect</b>	BA/BS LA License	10	\$111.55	Manages environmental analysis projects that involve complex mix of natural lands and built facilities for users or visitors. Includes evaluating sites for sustainable development characteristics, pedestrian environment, and capacity to support required programs or facilities. Leads visual analysis and evaluates scenic condition of the site, using GIS and CADD.
<b>Landscape Architect II</b>	BA/BS LA License	8	\$90.29	Involved in the analysis of environmental settings that are being used by the public or as a part of a government facility. The analysis may involve inventory of the developed areas along with natural or cultivated areas of a project site. Identifies solutions that fit into a framework of sustainable development. Works independently and may be responsible for a discrete component of the project site analysis using GIS and CADD.
<b>Landscape Architect I</b>	BA/BS LA License	5	\$79.13	Involved in the analysis of environmental settings that are being used by the public or as a part of a government facility. The analysis may involve inventory of the developed areas along with natural or cultivated areas of a project site using GIS and CADD.
<b>Landscape Designer II</b>	BA/BS	3	\$70.17	Under the direction of senior personnel, prepares analysis maps or inventories to describe existing site conditions. Completes preparation of maps or exhibits to illustrate issues related to site conditions such as slopes or topography using GIS and CADD.
<b>Landscape Designer I</b>	BA/BS	1	\$57.17	Under the direction of senior personnel, assists in the evaluation of a project site characteristic, such as condition of trails, day use areas, visitor support facilities, and natural areas at a project site. Prepares exhibits using a combination of GIS and CADD.
<b>Senior Civil Engineer</b>	BS Licensed Eng (PE)	10	\$102.50	Provides support to project team involved in the environmental analysis of a site including impacts of potable water supply, stormwater discharge or conveyance system, and wastewater disposal. This work normally involves detailed analysis of infrastructure capacity or site condition by use of computer models to assess potable water needs, stormwater management, and waste discharges.
<b>Project Civil Engineer</b>	BS Licensed Eng (PE)	5	\$83.84	Assists the Senior Civil Engineer in the environmental analysis of a site as it relates to civil engineering including water supply, stormwater discharges, and wastewater treatment. A typical work product would be analysis to support water efficiency.
<b>Senior Environmental Scientist</b>	MS	10	\$121.06	Leads the review and analysis of project sites that have limited development or that require complex decision-making by federal agencies regarding protection natural resources, sustainable site development or regulatory controls. Has specific expertise in one or more areas such as freshwater ecology, wetlands, botany, ecology, soils science, or geology. Much of this work requires preparation of complex GIS mapping illustrating various resources.



<b>Project Environmental Scientist</b>	BA/BS	5	\$77.62	Prepares study plans for natural resources in their area of expertise and completes necessary field assessment with assistance of other environmental scientists, landscape architects, or staff environmental scientists. Assists in mapping and preparation of GIS data for resource analysis. Prepares guidance on project issues in field of expertise.
<b>Staff Environmental Scientist</b>	BA/BS	1	\$63.33	Completes field work or project research under the direction of a Project Environmental Scientist. Assists in mapping and preparation of GIS data for resource analysis. Completes field assignments that include environmental inventory to protect natural resources during construction. Tasks may include field biological inventory of plants or environmental conditions related soils, ecological communities or geology.
<b>Senior Planner</b>	BA/BS	10	\$91.22	Leads assessments of communities or regions as it relates to government responsibilities, function, and population. These assessments may be at the municipal or regional level or at a facility such as parks, medical facilities or river corridors. Fiscal impacts of projects or changes in population or delivery of public service may be included as a part of an environmental assessment. Prepares and implements public outreach to effectively engage the public as a part of a federal development project.
<b>Planner</b>	BA/BS	5	\$59.86	Prepares and executes site assessments related to population, site use, and local or regional characteristics such as growth trends, changes in housing, land use, sustainability and fiscal implication of the project. Prepares complex GIS analysis of land use and demographic data to gain insight on local or regional trends.
<b>GIS Specialist</b>	AAS, GIS Certificate	4	\$57.08	Conducts map development using GIS to accurately illustrate site condition maps. GIS data may be developed using existing data from resource agencies or include site specific data prepared by project environmental scientists or planners. Site specific data may include natural resource boundaries, infrastructure, streams, and soils. Data mash-up combining natural resource data and demographics, municipal, or watershed boundaries are frequently prepared. Digital elevation models are assembled to assist in the visual analysis of project development and to support photographic simulations.
<b>Administrative Support</b>	HS Diploma	3	\$41.46	Provides word processing and technical typing, clerical and administration support, faxing and photocopying and other general office tasks as assigned.





## 7. Labor Category Hourly Rates

Contractor will accept FFP  
Government Awarded Prices (Net Prices)

LABOR CATEGORY SIN Numbers: 899-1, 899-7	Year 1/ Base 11/24/10 – 11/23/11	Year 2 11/24/11 – 11/23/12	Year 3 11/24/12 – 11/23/13	Year 4 11/24/13 – 11/23/14	Year 5 11/24/14 – 11/23/15
Principal	\$188.81	\$192.59	\$196.44	\$200.37	\$204.37
Senior Landscape Architect	\$111.55	\$113.78	\$116.06	\$118.38	\$120.75
Landscape Architect II	\$90.29	\$92.10	\$93.94	\$95.82	\$97.73
Landscape Architect I	\$79.13	\$80.71	\$82.33	\$83.97	\$85.65
Landscape Designer II	\$70.17	\$71.57	\$73.00	\$74.46	\$75.95
Landscape Designer I	\$57.17	\$58.31	\$59.48	\$60.67	\$61.88
Senior Civil Engineer	\$102.50	\$104.55	\$106.64	\$108.77	\$110.95
Project Civil Engineer	\$83.84	\$85.52	\$87.23	\$88.97	\$90.75
Senior Environmental Scientist	\$121.06	\$123.48	\$125.95	\$128.47	\$131.04
Project Environmental Scientist	\$77.62	\$79.17	\$80.76	\$82.37	\$84.02
Staff Environmental Scientist	\$63.33	\$64.60	\$65.89	\$67.21	\$68.55
Senior Planner	\$91.22	\$93.04	\$94.91	\$96.80	\$98.74
Planner	\$59.86	\$61.06	\$62.28	\$63.52	\$64.79
GIS Specialist	\$57.08	\$58.22	\$59.39	\$60.57	\$61.79
Administrative Support	\$41.46	\$42.29	\$43.13	\$44.00	\$44.88

The Service Contract Act (SCA) is applicable to this contract and it includes SCA applicable labor categories. The prices for the cited SCA labor categories are based on the U.S. Department of Labor Wage Determination Number(s) identified in the SCA matrix and below. The prices offered are based on the preponderance of where work is performed and should the contractor perform in an area with lower SCA rates, resulting in lower wages being paid, the task order prices will be discounted accordingly.

SCA Matrix		
SCA Eligible Contract Labor Category	SCA Equivalent Code Title	WD #
Administrative Support	01613 Word Processor III	52367







**the LA group**  
Landscape Architecture  
and Engineering, P.C.

[www.thelagroup.com](http://www.thelagroup.com)

